

EXLON-Fluoro Resin Series

EXLON PFA COIL Tubing

IWASE



PFA tubing are curved and formed in a coil shape. These tubing are suitable for pipe arrangements in moving parts of devices and pipe arrangements with undetermined distances.



Expansion and
contraction

Expansion and contraction

The coil shape enables these tubing to be used in moving parts where expansion and contraction are required.



Highly heat
resistant

Highly heat resistant

These tubing are made of PFA resin with the heat resistance which allows continuous uses up to 260°C.

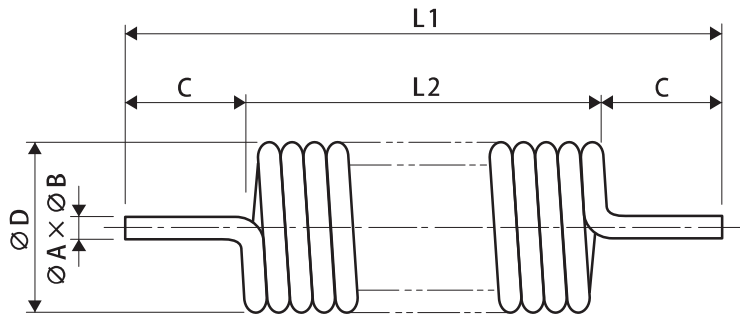


Chemical
resistance

Chemical resistance

These tubing are resistant to and inactive against most chemicals and solvents.

EXLON PFA COIL Tubing



$\varnothing A \times \varnothing B$: Outer diameter \times Inner diameter
 C : Straight section
 $\varnothing D$: Outer diameter of the coil
 L1 : Total length of the coil
 L2 : Length of the bonded section of the coil

Standard Size						
Size ($\varnothing A \times \varnothing B$)	Straight section (C)	Outer diameter of the coil ($\varnothing D$)	Total length of the coil (L1)	Length of the bonded coil (L2)	Number of winding	Range of stretching section (mm)
4 × 2	100	30	300	100	20	400
6 × 4	100	40	350	150	20	500
8 × 6	100	60	400	200	20	600
10 × 8	100	80	450	250	20	800
12 × 10	100	150	500	300	20	1,000
3.17 × 1.59	100	30	300	100	20	400
6.35 × 4.35	100	40	350	150	20	500
9.53 × 7.53	100	80	450	250	20	800
12.7 × 10.7	100	150	500	300	20	1,000

- The standard length of the straight section at both ends is 100L, but we can produce other lengths.
- We receive orders starting with a single tubing.
- We can produce tubing with other sizes. Please contact us for details.
- The coiling work results in 15% to 20% flatness on the contour of the tubing.



EXLON PFA COIL Tubing



Expansion and contraction



Highly heat resistant



Chemical resistance